



2915 High School Road
Indianapolis, IN 46224

SUMMARY REPORT ACADEMIC YEAR 2004-2005 STATEWIDE SURVEY OF NURSING PROGRAMS

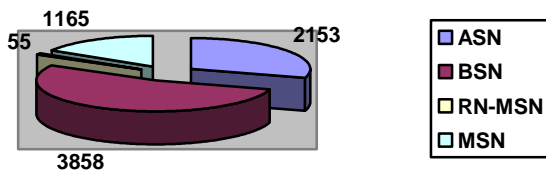
•
Compiled fall 2005

Introduction

The Indiana Nursing Workforce Development Coalition (INWDC) has completed its third annual survey of all statewide programs within Indiana. Information gathered includes numbers of students enrolled and graduated as well as numbers related to faculty needs. The 2004-2005 results represent 26 schools of the 40 schools surveyed. This 65% response rate is significantly down from the 93% response rate for 2003-2004 survey cycle. At this time it is impossible to track changes in data given the disparity in response rate.

Findings at a Glance

- Nursing enrollments by program
 - ASN = 2153 (171 [7.9%] were male)
 - BSN = 3858 (includes RN, traditional & accelerated) (241 [6.2%] male)
 - MSN = 1165 (77 [6.6%] were male)
 - RN-MSN = 55 (2 [3.6] were male)



- Diversity of Enrollments
 - ASN** = 86% were Caucasian; 3.9% were African American; 2% were Hispanic
 - BSN** = 77% were Caucasian; 4% were African American; 1.9% were Hispanic
(note that there were higher numbers of Asian/Pacific Islanders enrolled
baccalaureate programs compared to associate degree programs)

- Number of available seats for new admits
 - ASN** = 1241
 - TRABSN** = 1076
 - ACCBSN** = 124
 - RNBSN**= 396
 - MSN** = 338
 - RNMSN**= 10

- New Admits for academic year
 - ASN** = 1176
 - TRABSN** = 1447
 - ACCBSN** = 98
 - RNBSN**= 424
 - MSN** = 539
 - RNMSN**= 40

- Qualified but not admitted
 - ASN** = 1531
 - TRABSN** = 693
 - ACCBSN** = 112
 - RNBSN**= 21
 - MSN** = 99
 - RNMSN**= 0

- Graduate Numbers (8/1/04-7/31/05)
 - ASN** = 1104
 - BSN** = 758
 - RNBSN**= 166
 - MSN** = 253

- Anticipated Graduate Numbers (8/1/05-7/31/06)
 - ASN** = 1147
 - BSN** = 851
 - RNBSN**= 212
 - MSN** = 257

According to actual 2005 graduate numbers reported there is a ratio of 1.4 ASN graduates to every 1 BSN graduate. Projected 2006 graduate figures anticipate that there will be a ratio 1.3 ASN graduates for every one BSN graduates. These data **suggest a trend** toward increasing the percentage of bachelor prepared nurses in the nursing workforce.

- Reasons for Turning Away Students
 1. Faculty vacancies (15% of respondents)
 2. Lack of faculty positions (42% of respondents)
 3. Lack of clinical site availability (50% of respondents)

- Faculty Vacancies
 - Current reported were 25 full-time and 5 part-time
 - Projected reported were 34 full-time and 15 part-time

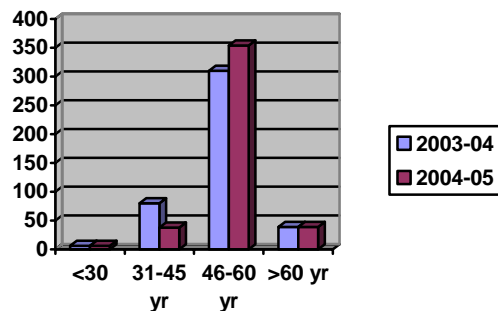
- Difficulty in Hiring Faculty
 - 26 responded that recruiting masters prepared nurse faculty was very to somewhat difficult
 - 26 responded that recruiting doctorally prepared faculty was very difficult
 - Current faculty expertise according to existing vacancies is OB and Peds.
 - Projected faculty expertise is across specialties

- Faculty composition = It appears that part-time faculty numbers are accounting for almost half of the faculty workforce
 - Full-time = 436 (58%)
 - Part-time = 305 (41%)

- Faculty Age Ranges by employment category (N=628, FT=436, PT=192)

AGE	Under 30 years	31-40 years	41-50 years	51-60 years	Over 60 years
FULL TIME	5 (1%)	38 (9%)	156 (36%)	198 (45%)	39 (9%)
PART TIME	20	40	69	56	7

It appears that the distribution of faculty by age remains virtually unchanged over a two-year period as noted in chart below



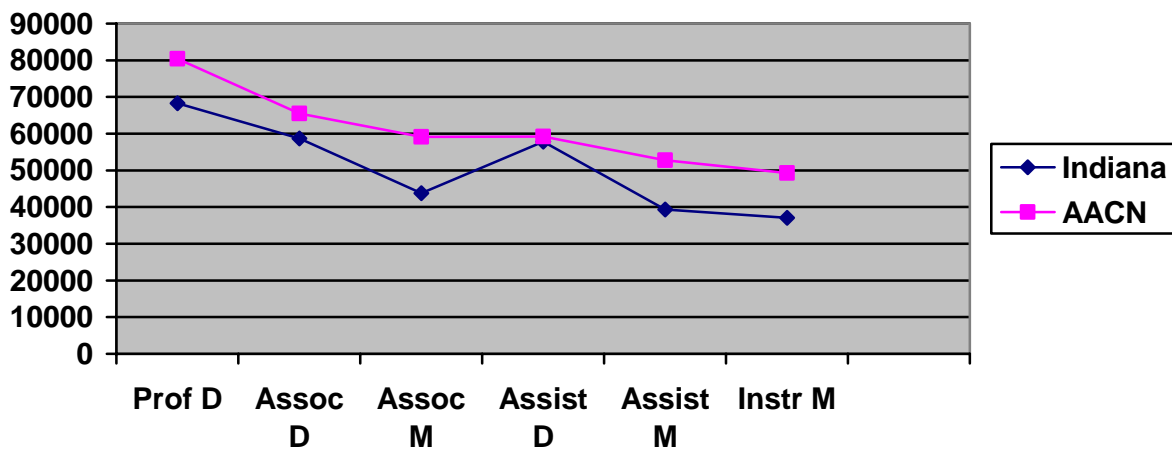
- Faculty Degrees

Degree	Full time Faculty	Part time Faculty
< bachelor	0	2
bachelor	48	121
Masters	286	182
Doctorate	151	8

In comparing these figures with 2003-04 the distribution by degree appears to remain essentially unchanged

- Faculty Salaries reported as means by rank and highest degree held
 - Professor with Doctorate = \$68,262
 - Associate Professor with Doctorate = \$58,703
 - Associate Professor with Masters = \$43,788
 - Assistant Professor with Doctorate = \$57,864
 - Assistant Professor with Masters = \$39,299
 - Instructor with Masters = \$37,095

In comparing these data to the AACN survey date, the following chart displays the comparison:



Glossary

Indiana Nursing Workforce Development Coalition Statewide Survey of Nursing Students and Faculty

The following definitions are for purposes of the survey.

Baccalaureate Degree – bachelor of science in nursing. Programs affiliated with universities and senior colleges.

ASN – associate of science in nursing. Represents academic credential of ASN, AD, or ADN. Programs usually affiliated with community colleges and also found in smaller numbers in senior colleges and universities.

RNBSN – mobility program for registered nurses pursuing a baccalaureate degree in nursing.

TRABSN – baccalaureate degree in nursing for individuals pursuing a first-degree in college.

ACCBSN – accelerated program for individuals with a prior college degree pursuing a baccalaureate degree in nursing.

RNMSN – graduate program for registered nurses with an associate degree or diploma in nursing pursuing a Master's in Nursing.

MSN – graduate program for registered nurses with a baccalaureate degree in nursing pursuing a Master's in Nursing.

Enrollment Capacity – maximum number of students that can be enrolled in the nursing major.

Nursing Enrollment – number of students actually enrolled in the nursing major including newly admitted.

New Admits – actual number of students admitted.

Faculty Vacancies – number of positions unfilled.

Clinical Site – facility where healthcare is delivered.

No Show – student was accepted to program, but did not enroll

FT – full-time; **PT** – part-time

Faculty Degree Levels

BS – Bachelor of Science in Nursing

MSN – Master of Science in Nursing

MS – Master of Science in a non-nursing major

DNS – Doctorate in Nursing

PhDNSG – Doctorate of Philosophy in Nursing Science; research emphasis

PhD – Doctorate of Philosophy in a major area of concentration; research emphasis

Edd – Doctorate in Education

