



2915 High School Road
Indianapolis, IN 46224

**SUMMARY REPORT
ACADEMIC YEAR 2005-2006
STATEWIDE SURVEY OF NURSING PROGRAMS**

•
Compiled spring 2007

Introduction

The Indiana Nursing Workforce Development Coalition (INWDC) has completed its fourth annual survey of all statewide programs within Indiana. Information gathered includes numbers of students enrolled and graduated as well as numbers related to faculty needs. The 2005-2006 results represent 29 schools of the 40 schools surveyed. This 72.5% response rate is significantly down from the 93% response rate for 2003-2004 survey cycle and the 75% response rate for 2004-2005.

Repeated efforts were made to invite schools participation and access issues were addressed as they were identified in an attempt to increase schools' participation. Schools participating included those that offered associate degrees, bachelors, and masters. Schools included in the survey population offer educational programs leading to licensure as a registered nurse or the advanced practice of nursing. Participating schools broadly represented all geographical locations within the state.

Findings at a Glance

- **Nursing enrollments by program**

Associate of Science in Nursing (ASN) = 1700

Gender	Ethnicity
F=90%	Caucasian=90%
M=10%	African/Am=6%
	Hispanic=2%
	Other=2%

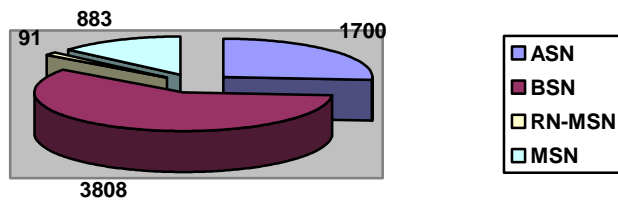
Baccalaureate of Science in Nursing (BSN) = 3808

- 2978 traditional (no prior college degree)
- 672 RN to BS (registered nurse to BSN)
- 158 accelerated (2nd degree)

Student type	Gender	Ethnicity
Traditional (T-BSN)	F=92% M=8%	Caucasian=86% African/Am=7% Hispanic=3% Other=4%
RN to BSN	F=94% M=6%	Caucasian=87% African/Am=9% Hispanic=2.5% Other=2%
Accelerated (A-BSN)	F=87% M=13%	Caucasian=80% African/Am=10% Hispanic=2% Other=8%

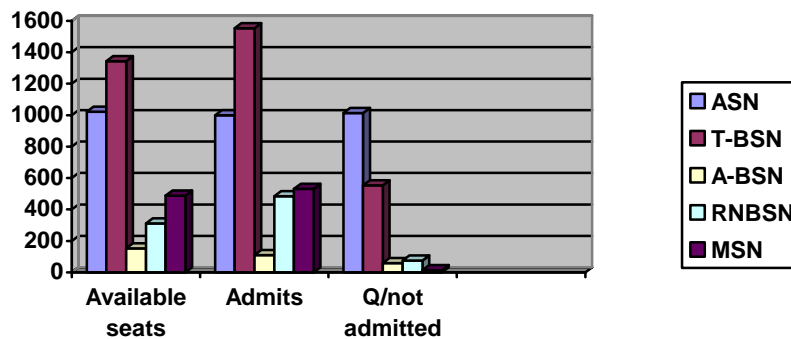
Masters' of Science in Nursing (MSN) = 947

Student type	Gender	Ethnicity
Traditional N=883	F=94% M=6%	Caucasian=91% African/Am=6% Hispanic=2% Other=2%
RN to MSN N=91	F=95% M=5%	Caucasian=97% African/Am=3% Hispanic=0% Other=0%



- **Nursing Enrollments**

Programs	Available admission seats	Admits	Qualified/not admitted
ASN	1021	1000	1014
T-BSN	1344	1553	533
A-BSN	152	109	59
RNBSN	311	484	76
MSN	488	532	14
RNMSN	45	73	0



- **Nursing Graduates**

Programs	Graduates 2005-2006	Graduates Projected 2006-2007	%Increase
ASN	995	1079	+ 8%
T-BSN	824	922	+ 11%
A-BSN	79	99	+ 20%
RNBSN	183	209	+ 12%
MSN	191	235	+ 19%
RNMSN	19	24	+ 21%

- **Reasons for Turning Away Students (rank ordered)**

1. Lack of faculty positions-- 46% (13 of 28 respondents)
2. Lack of clinical site availability--43% (12 of 28 respondents)
3. Faculty vacancies--25% (7 of 28 of respondents)
4. Lack of classroom/laboratory space--25% (7 of 28 respondents)
5. Lack of space in support courses—10.7% (3 of 28 respondents)

- **Faculty Vacancies**

- Current reported were 37 full-time and 18 part-time
- Projected reported were 41 full-time and 20 part-time

- **Difficulty in Hiring Faculty**
 - 26 (93%) responded that recruiting masters prepared nurse faculty was very to somewhat difficult
 - 27 (100%) responded that recruiting doctorally prepared faculty was very difficult
 - Current faculty expertise in needed in all areas with pediatrics and psychiatrics being most identified.
 - Projected faculty expertise demonstrates an increasing need across all specialty areas

- **Faculty composition**
 - It appears that part-time faculty numbers are accounting for almost half of the faculty workforce
 - Full-time = 436 (58%)
 - Part-time = 305 (41%)

- **Faculty Age Ranges by employment category (N=799, FT=502, PT=297)**

AGE reported on 721 cases	Under 30 years	31-40 years	41-50 years	51-60 years	Over 60 years
FULL TIME	8 (1.7%)	36 (7.8%)	133 (29%)	227 (49.5%)	55 (12%)
PART TIME	17	40	99	82	16

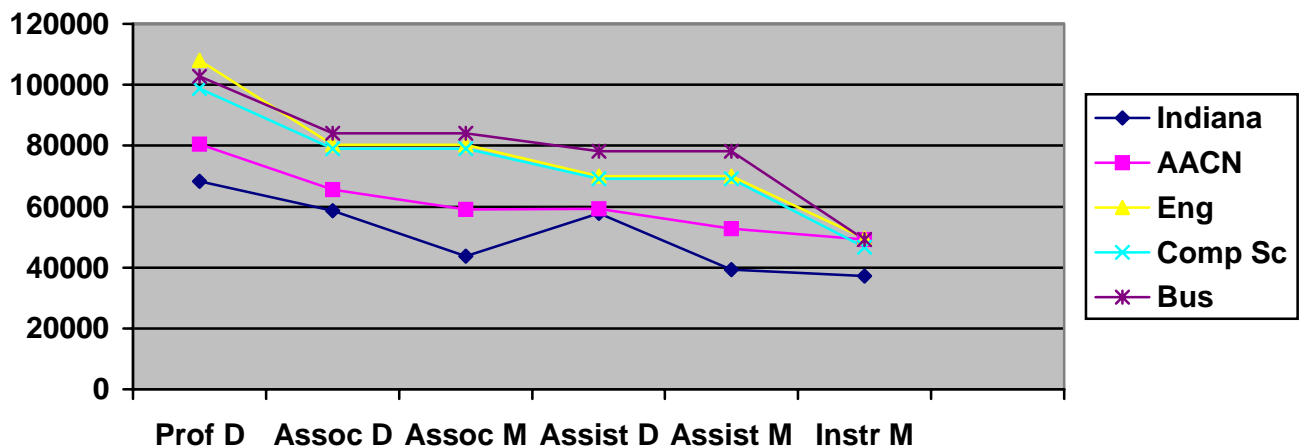
- **Faculty Degrees**

Degree	Full time Faculty	Part time Faculty
< bachelor	0	2
bachelor	48	121
Masters	286	182
Doctorate	151	8

In comparing these figures with 2003-04 the distribution by degree appears to remain essentially unchanged

- **Faculty Salaries** reported as means by rank and highest degree held
 - Professor with Doctorate = \$68,262
 - Associate Professor with Doctorate = \$58,703
 - Associate Professor with Masters = \$43,788
 - Assistant Professor with Doctorate = \$57,864
 - Assistant Professor with Masters = \$39,299
 - Instructor with Masters = \$37,095

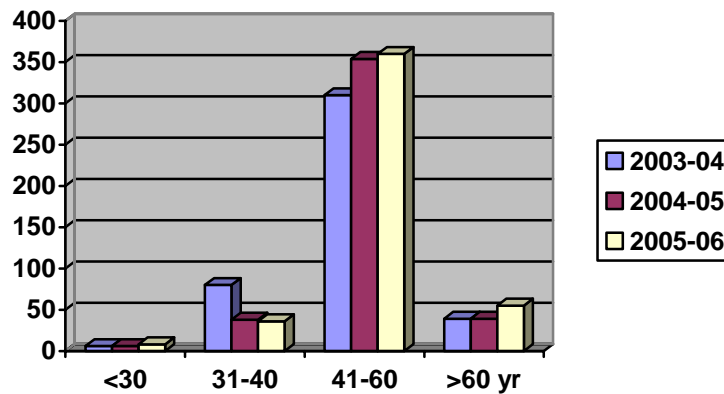
In comparing Indiana faculty salary data to the 2005 AACN survey date, the following chart indicates that Indiana nursing faculty salaries fall below the national mean for each rank and educational degree held. Included in this comparison are 2005-2006 nationally published salaries of faculty teaching in engineering (Eng); computer and informational sciences (Comp Sc); and business, management, marketing, and related support services (Bus). These data were taken from the College and University Professional Association for Human Resources *National Faculty Salary Survey by Discipline and Rank in Four-Year Colleges and Universities for the 2005-2006 Academic Year*.



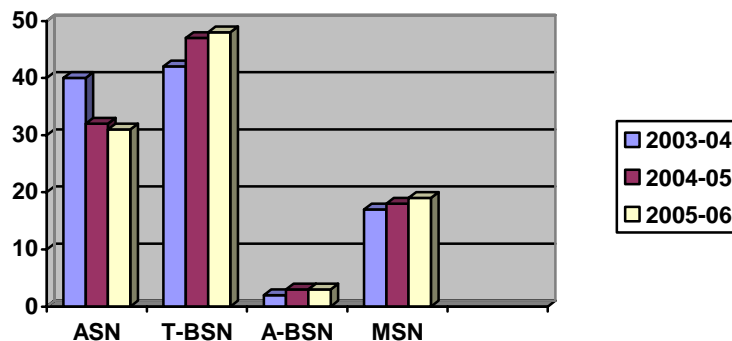
TRENDS AT A GLANCE

- **Faculty Age Distribution**

It appears that the distribution of faculty by age remains fairly consistent over a three-year period with a slight upward movement in age as noted in chart below. Faculty 30 and under appear not to be growing in numbers. These data suggest that nursing faculty are continuing to age at the same or slightly increased pace.

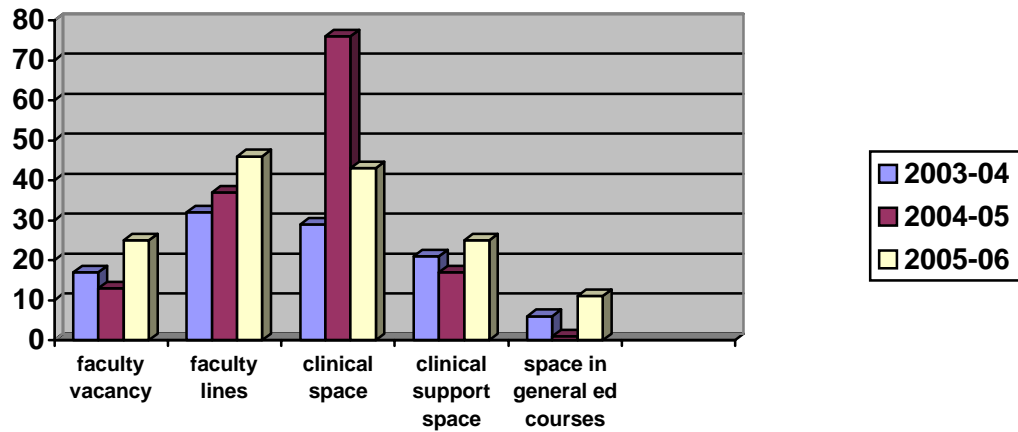


- **New Student Enrollments (Reported as % of total enrollments for each year)**



This table needs to be interpreted carefully as it assumes it reflects a different composition of schools' responses each year. The modest decrease in ASN enrollments and the modest increases in traditional BSN and graduate enrollments may be an artifact of the schools participating each survey cycle.

- **Reasons for Turning Students Away**



There appears to be a continuing need for additional faculty due to either vacancies or lack of faculty lines. Clinical space needs outweigh classroom or laboratory space. There is some evidence of increasing need for spaces in general education/support courses.