



2915 High School Road  
Indianapolis, IN 46224

**SUMMARY REPORT  
YEAR 2007  
STATEWIDE SURVEY OF NURSING PROGRAMS**  
■  
**Compiled spring 2008**

**Introduction**

The Indiana Nursing Workforce Development Coalition (INWDC) has completed its fifth annual survey of all statewide programs within Indiana. Information gathered from the survey process includes numbers of students enrolled and graduated as well as information related to faculty needs. The 2006-2007 results represent 40 schools of the 44 schools identified as possible responders. This 90.9% response rate is significantly up from the prior annual survey cycle.

Schools participating included those that offered associate degrees, bachelors, and masters. Schools represented in the survey population offer both public and private educational programs leading to licensure as a registered nurse or the advanced practice of nursing. Participating schools represented all geographical locations within the state. (Licensed Practical Nurse Programs were not surveyed as part of this effort).

## **Findings at a Glance**

- **Nursing enrollments by program**

### **Associate of Science in Nursing (ASN) = 2,402**

Gender	Ethnicity
F= 90%	Caucasian=85.6%
M=10%	African/Am=6.8%
	Hispanic=2.4%
	Other=5.2%

### **Baccalaureate of Science in Nursing (BSN) = 6,866**

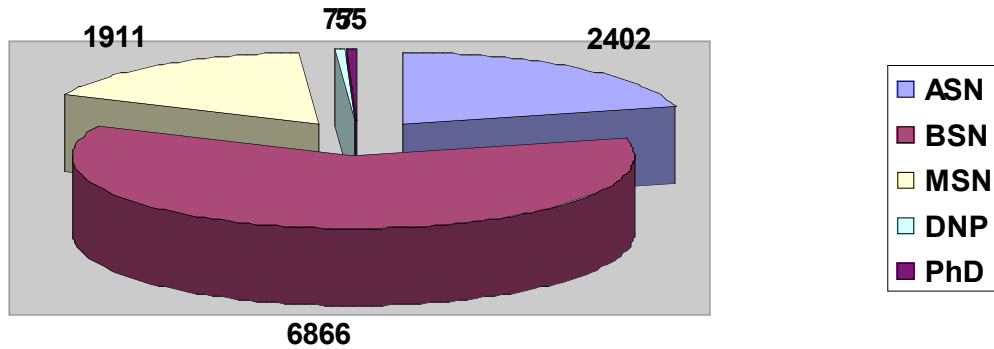
- 4,689 traditional (no prior college degree)
- 1,874 RN to BS (registered nurse to BSN)
- 303 accelerated (2<sup>nd</sup> degree)

Student type	Gender	Ethnicity
Traditional (T-BSN)	F=92% M=8%	Caucasian=86.7% African/Am=5.3% Hispanic=3% Other=5%
RN to BSN	F=94% M=6%	Caucasian=86.3% African/Am=8.7% Hispanic=1.6% Other=3.4%
Accelerated (A-BSN)	F=86% M=14%	Caucasian=80.4% African/Am=8.3% Hispanic=2.5% Other=8.6%

### **Masters' of Science in Nursing (MSN) = 1,911**

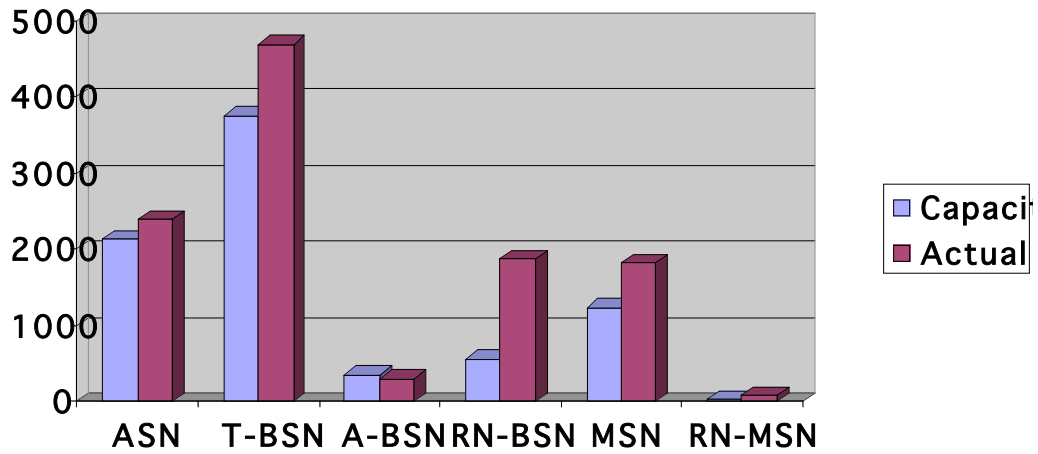
- 1,828 traditional (entering with bachelor degree)
- 83 RN to MS (entering without bachelor degree)

Student type	Gender	Ethnicity
Traditional	F=93% M=7%	Caucasian=90% African/Am=5.9% Hispanic=1.3% Other=2.8%
RN to MSN	F=94% M=6%	Caucasian=72.2% African/Am=8.3% Hispanic=8.3% Other=11.2%



2007 Enrollments by Program

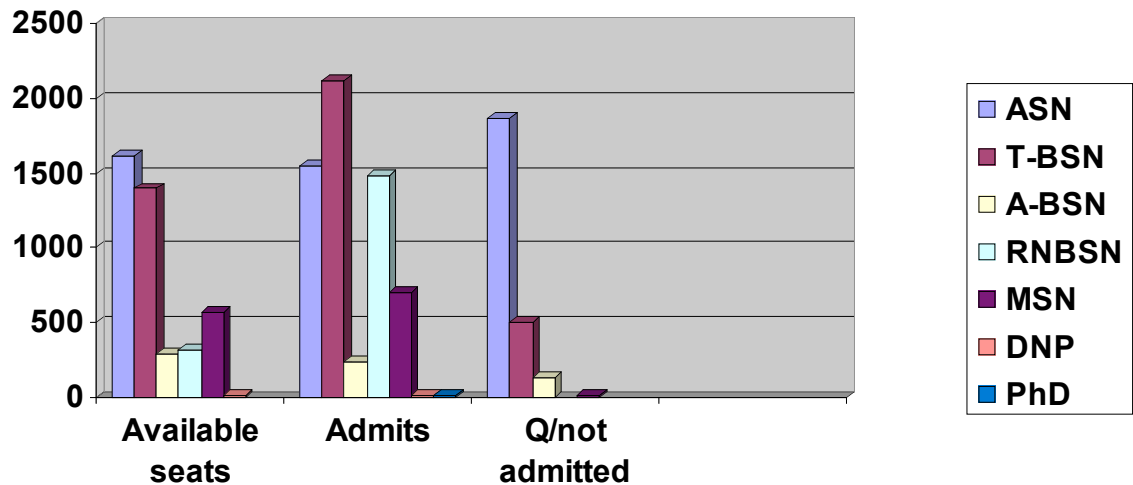
▪ Program Capacity vs. Program Enrollments



It is apparent that the program enrollments in Indiana schools of nursing exceed the established program capacity.

▪ **Nursing Enrollments by Program Degree**

Programs	Available admission seats	Admits	Admitted but did not attend	Qualified/not admitted
ASN	1616	1545	119	1867
T-BSN	1396	2121	466	500
A-BSN	290	235	13	127
RNBSN	310	1482	37	
MSN	563	693	17	6
RNMSN		44		
DNP	8	7		
PhD		12		



▪ **Nursing Graduates**

Programs	Graduates 2006-2007	Graduates Projected 2007-2008	%Increase Anticipated
ASN	1337	1500	+12.2%
T-BSN	1210	1259	+4%
A-BSN	93	140	+50.5%
RNBSN	648	318	-50.9%
MSN	345	375	+8.7%
DNP	2	4	+100
PhD	4	12	+200%

- **Reasons for Turning Away Students (rank ordered)**
  1. Lack of faculty positions-- 35% (13 of 37 respondents)
  2. Lack of clinical site availability--46% (12 of 26 respondents)
  3. Faculty vacancies--16% (6 of 38 of respondents)
  4. Lack of classroom/laboratory space--21% (8 of 38 respondents)
  5. Lack of space in support courses—7.9% (3 of 38 respondents)
  
- **Faculty Vacancies**
  - Currently reported: 23 full-time and 7 part-time
  - Projected (2008-2009): 60 full-time and 42 part-time
  
- **Difficulty in Hiring Faculty**
  - 36 (92%) responded that recruiting masters prepared nurse faculty was very to somewhat difficult
  - 38 (100%) responded that recruiting doctorally prepared faculty was very to somewhat difficult
  - Current faculty expertise in needed in all areas with pediatrics, obstetrics, and psychiatrics being most identified.
  - Projected faculty expertise demonstrates an increasing need across all specialty areas especially gerontology and critical care
  
- **Faculty composition**
  - It appears that part-time faculty numbers are accounting for almost half of the reported faculty workforce (by headcount)
    - Full-time = 649 (56%)
    - Part-time = 502 (44%)

- **Faculty Age Ranges by employment category (N=1020, FT=645, PT=375)**

AGE reported on 1020 cases	Under 30 years	31-40 years	41-50 years	51-54 years	55-60 years	61 and over
<b>FULL TIME</b>	<b>12 (1.9%)</b>	<b>74 (11.5%)</b>	<b>181 (28%)</b>	<b>140 (21.7%)</b>	<b>154 (23.9%)</b>	<b>84 (13%)</b>
<b>PART TIME</b>	<b>31</b>	<b>74</b>	<b>148</b>	<b>55</b>	<b>40</b>	<b>27</b>

\*\*13% of the faculty workforce has reached retirement age

\*\*37% of the faculty workforce has or will reach retirement age by 2013

- **Educational-clinical partnerships that offset instructional resources**
  - Free of charge clinical instructional support N=274
  - Financial remuneration for instructional support N=16
  - Exchange of knowledge expertise N=3
  - Financial gift for salary support N=12
  - Joint appointments N=8
  - Other (not specified) N=1

- **Faculty Degrees**

<b>Degree</b>	<b>Full time Faculty</b>	<b>Part time Faculty</b>
< bachelor	1	2
bachelor	72	137
Masters	419	208
Doctor of Nursing Science	42	5
PhD in Nursing	78	13
PhD (not in nursing)	18	5
Doctor of Education	14	2
Other	4	6

**In comparing these figures with 2003-04 the distribution by degree appears to remain essentially unchanged**

- **Faculty Salaries** reported as means by rank and highest degree held (tenure track/tenured rankings only)
  - Professor with Doctorate = \$71,900
  - Associate Professor with Doctorate = \$63,996
  - Associate Professor with Masters = \$55,471
  - Assistant Professor with Doctorate = \$57,365
  - Assistant Professor with Masters = \$48,735
  - Instructor with Masters = \$45,700